



**DS-PS201-WE&WB&WA Wireless Sounder
Indoor**

User Manual

Contents

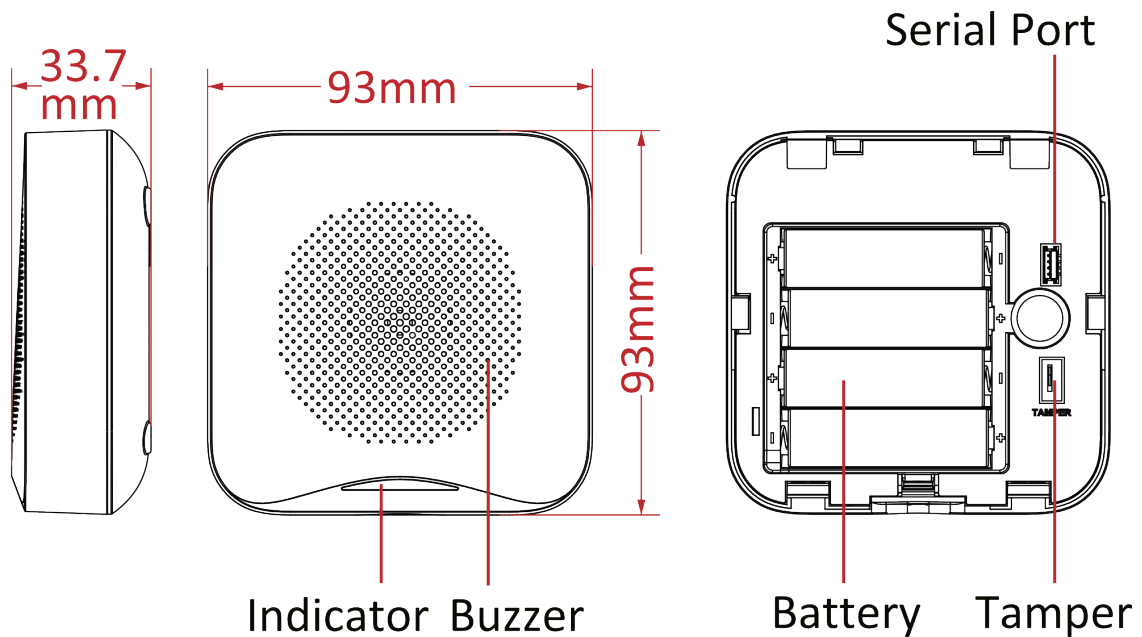
Chapter 1 Components Introduction	1
Chapter 2 Enrollment via App	2
Chapter 3 Installation	3
3.1 Installation Preparation	3
3.2 Mounting with Screws	3
Chapter 4 Configure via App	5
Chapter 5 Specifications	6
Appendix A. Legal Information	7
Appendix B. Symbol Conventions	9

Chapter 1 Components Introduction

Check components location and name for further use.

 **Note**

- Structures may differ in different models, please refer to the actual product.



Indicator Status	Control Panel Status
Blue/Red LED flashes	Alarm
Blue/Red LED flashes once	Armed
Blue/Red LED flashes twice	Disarmed
Green LED flashes	Delay on arming/ disarming
Green LED flashes continuously	Find me
Orange LED flashes	Enrolling
Green LED flashes 7 times	Enrolled
Blue/Red LED flashes rapidly	Offline


Chapter 2 Enrollment via App

Steps

1. Download Hik-Connect and log in.
2. Enroll the control panel to the App.

Note

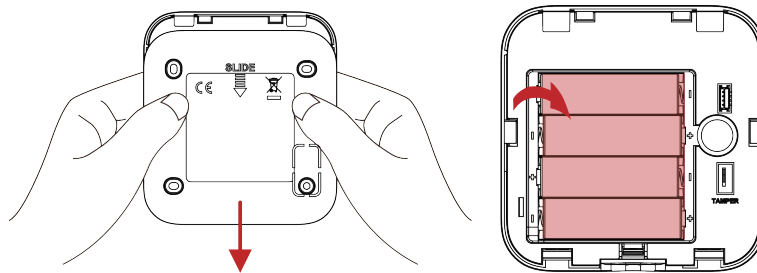
For more details, refer to the user manual of Hik-Connect App and control panel.

3. On the device list page, tap **Add Device**.
4. Tap **Device** →  .
5. Select adding method.
 - Select **Manual Adding**, scan the QR code or enter the serial No.

Note

The QR code is usually on the back cover of the device.

- Select **Batch Adding**, the detector will be enrolled to the control panel automatically.
6. Slide down to remove the rear cover. Install 4 batteries into the device. Orange LED starts to flash.




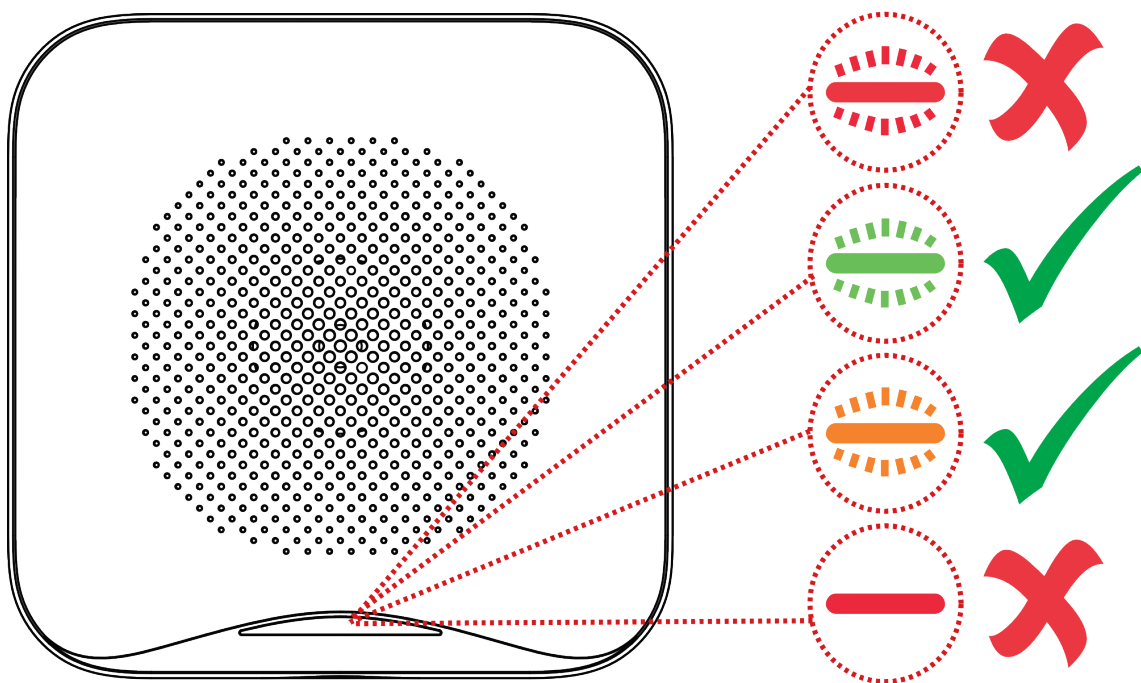
7. The green LED flashes for 7 times, the device is enrolled.

Chapter 3 Installation

3.1 Installation Preparation

Steps

1. Tap the device on the device list page. And tap  → **Signal Strength Test** to check signal strength.

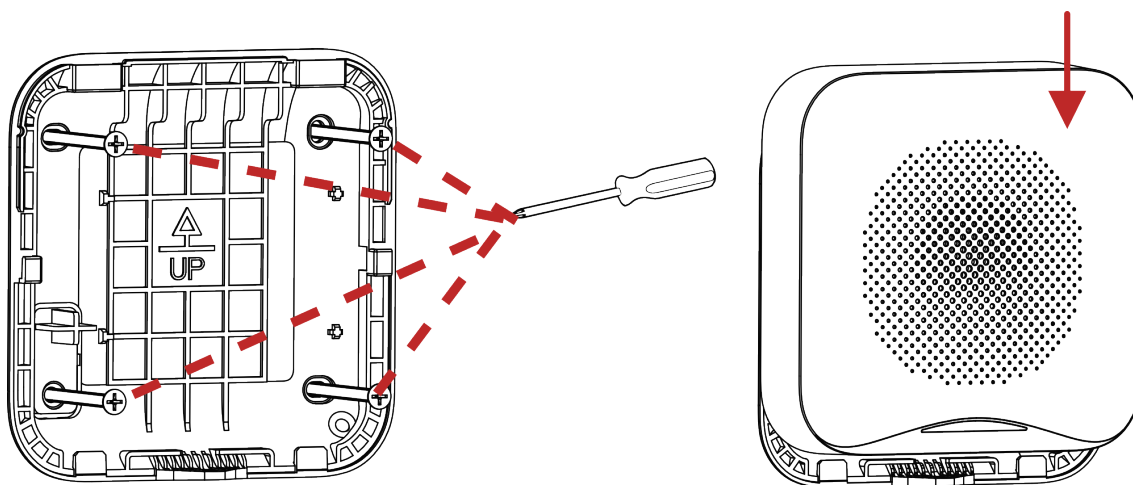


2. Tap  → **Volume Test** listen to different levels of volume, and select the appropriate level.

3.2 Mounting with Screws


Steps

1. Fix the rear cover to the wall with 4 screws. And install the front cover.



2. After the device is installed, you can view the device status, alarm duration, version, etc.

Chapter 4 Configure via App

Tap the device on the device list page, and tap  to configure device parameters.

Name

Edit device name.

Area

Select linked area or add new area.

Sound Indication

Select the volume level of alarm, armed/disarmed, delay on arming/ disarming sound.

LED Indication

After enabled, when the alarm triggers, the device is armed or disarmed, or the device is delayed on arming or disarming, the LED indicator will display different status.

Alarm Duration

The alarm indication ends after the selected duration time.

Deactivation

The selected part will be deactivated.

Find Me

Enter the find me mode to search for the device location.

Chapter 5 Specifications

Model WE: 868 Mhz WB: 433 Mhz WA: 915 Mhz	DS-PS201-WE	DS-PS201-WB	DS-PS201-WA
Installation	Indoors		
Indication method	Acoustic and LED		
Sound volume level	Adjustable, 80–95 dB at a distance of 1 m		
Indication of armed/ disarmed status	Yes		
Power supply	4 × AA batteries		
Power consumption	Max current: 400 mA Quiescent current: 33 uA		
Battery life	Up to 2 years (standby time)		
Temperature indicator	Yes		
Transmission technology	Tri-X 868.0 - 868.6 MHz	Tri-X 433.1-433.7 MHz	Tri-X 912.5-917.4 MHz
Transmission range (free space)	Up to 1,600 m	Up to 1,200 m	Up to 1,600 m
Maximum effective radiated power (ERP)	Up to 25 mW	Up to 10 mW	Up to 60 mW
Tamper	Yes		
Operating temperature	-10°C to 55°C (14°F to 131°F)		
Operation humidity	10% to 90%		
Protection class of body	No		
Dimension (W × H × D)	93 × 93 × 33.7 mm		
Weight	117 g		

Appendix A. Legal Information

About this Document

- This Document includes instructions for using and managing the Product. Pictures, charts, images and all other information hereinafter are for description and explanation only.
- The information contained in the Document is subject to change, without notice, due to firmware updates or other reasons. Please find the latest version of the Document at the Hikvision website (<https://www.hikvision.com>). Unless otherwise agreed, Hangzhou Hikvision Digital Technology Co., Ltd. or its affiliates (hereinafter referred to as "Hikvision") makes no warranties, express or implied.
- Please use the Document with the guidance and assistance of professionals trained in supporting the Product.

About this Product

This product can only enjoy the after-sales service support in the country or region where the purchase is made.

Acknowledgment of Intellectual Property Rights

- Hikvision owns the copyrights and/or patents related to the technology embodied in the Products described in this Document, which may include licenses obtained from third parties.
- Any part of the Document, including text, pictures, graphics, etc., belongs to Hikvision. No part of this Document may be excerpted, copied, translated, or modified in whole or in part by any means without written permission.
- **HIKVISION** and other Hikvision's trademarks and logos are the properties of Hikvision in various jurisdictions.
- Other trademarks and logos mentioned are the properties of their respective owners.

LEGAL DISCLAIMER

- TO THE MAXIMUM EXTENT PERMITTED BY APPLICABLE LAW, THIS DOCUMENT AND THE PRODUCT DESCRIBED, WITH ITS HARDWARE, SOFTWARE AND FIRMWARE, ARE PROVIDED "AS IS" AND "WITH ALL FAULTS AND ERRORS". HIKVISION MAKES NO WARRANTIES, EXPRESS OR IMPLIED, INCLUDING WITHOUT LIMITATION, MERCHANTABILITY, SATISFACTORY QUALITY, OR FITNESS FOR A PARTICULAR PURPOSE. THE USE OF THE PRODUCT BY YOU IS AT YOUR OWN RISK. IN NO EVENT WILL HIKVISION BE LIABLE TO YOU FOR ANY SPECIAL, CONSEQUENTIAL, INCIDENTAL, OR INDIRECT DAMAGES, INCLUDING, AMONG OTHERS, DAMAGES FOR LOSS OF BUSINESS PROFITS, BUSINESS INTERRUPTION, OR LOSS OF DATA, CORRUPTION OF SYSTEMS, OR LOSS OF DOCUMENTATION, WHETHER BASED ON BREACH OF CONTRACT, TORT (INCLUDING NEGLIGENCE), PRODUCT LIABILITY, OR OTHERWISE, IN CONNECTION WITH THE USE OF THE




PRODUCT, EVEN IF HIKVISION HAS BEEN ADVISED OF THE POSSIBILITY OF SUCH DAMAGES OR LOSS.

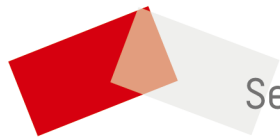
- YOU ACKNOWLEDGE THAT THE NATURE OF THE INTERNET PROVIDES FOR INHERENT SECURITY RISKS, AND HIKVISION SHALL NOT TAKE ANY RESPONSIBILITIES FOR ABNORMAL OPERATION, PRIVACY LEAKAGE OR OTHER DAMAGES RESULTING FROM CYBER-ATTACK, HACKER ATTACK, VIRUS INFECTION, OR OTHER INTERNET SECURITY RISKS; HOWEVER, HIKVISION WILL PROVIDE TIMELY TECHNICAL SUPPORT IF REQUIRED.
- YOU AGREE TO USE THIS PRODUCT IN COMPLIANCE WITH ALL APPLICABLE LAWS, AND YOU ARE SOLELY RESPONSIBLE FOR ENSURING THAT YOUR USE CONFORMS TO THE APPLICABLE LAW. ESPECIALLY, YOU ARE RESPONSIBLE, FOR USING THIS PRODUCT IN A MANNER THAT DOES NOT INFRINGE ON THE RIGHTS OF THIRD PARTIES, INCLUDING WITHOUT LIMITATION, RIGHTS OF PUBLICITY, INTELLECTUAL PROPERTY RIGHTS, OR DATA PROTECTION AND OTHER PRIVACY RIGHTS. YOU SHALL NOT USE THIS PRODUCT FOR ANY PROHIBITED END-USES, INCLUDING THE DEVELOPMENT OR PRODUCTION OF WEAPONS OF MASS DESTRUCTION, THE DEVELOPMENT OR PRODUCTION OF CHEMICAL OR BIOLOGICAL WEAPONS, ANY ACTIVITIES IN THE CONTEXT RELATED TO ANY NUCLEAR EXPLOSIVE OR UNSAFE NUCLEAR FUEL-CYCLE, OR IN SUPPORT OF HUMAN RIGHTS ABUSES.
- IN THE EVENT OF ANY CONFLICTS BETWEEN THIS DOCUMENT AND THE APPLICABLE LAW, THE LATTER PREVAILS.

© Hangzhou Hikvision Digital Technology Co., Ltd. All rights reserved.

Appendix B. Symbol Conventions

The symbols that may be found in this document are defined as follows.

Symbol	Description
 Danger	Indicates a hazardous situation which, if not avoided, will or could result in death or serious injury.
 Caution	Indicates a potentially hazardous situation which, if not avoided, could result in equipment damage, data loss, performance degradation, or unexpected results.
 Note	Provides additional information to emphasize or supplement important points of the main text.



See Far, Go Further